

TM5-4320-251-24P

DEPARTMENT OF THE ARMY TECHNICAL MANUAL

TECHNICAL MANUAL

DEPARTMENT OF THE ARMY TECHNICAL MANUAL

ORGANIZATIONAL, DIRECT SUPPORT

AND GENERAL SUPPORT MAINTENANCE

REPAIR PARTS AND SPECIAL TOOLS LISTS

PUMP, RECIPROCATING, POWER DRIVEN,

DIAPHRAGM, GAS ENGINE DRIVEN,

WHEEL MOUNTED, 100 GPM

THE GORMAN-RUPP COMPANY MODEL 4D2A016

FSN 4320-407-2582

HEADQUARTERS, DEPARTMENT OF THE ARMY

HEAD QUARTERS, DEPARTMENT OF THE ARMY

OCTOBER 1971

CHANGE

NO. 1

HEADQUARTERS
DEPARTMENT OF THE ARMY
WASHINGTON, D.C., 10 December 1990Organizational, Direct Support and General Support
Maintenance Repair Parts and Special Tools ListsPUMP, RECIPROCATING, POWER DRIVEN,
DIAPHRAGM, GAS ENGINE DRIVEN,
WHEEL MOUNTED, 100 GPM
THE GORMAN-RUPP COMPANY MODEL 4D2A016
FSN 4320-407-2582

Current as of 29 August 1989

Approved for public release; distribution is unlimited

TM5-4320-251-24P, 28 October 1971, is changed as follows:

All changes, additions, deletions of Federal Stock Numbers or Manufacturer's Part Numbers within this change should be appropriately reflected in the index.

Page vi, paragraph 7, line 6. Change to read "to U.S. Army Troop Support, 4300 Goodfellow Blvd., ATTN: AMSTR-MMTS, St. Louis, Mo. 63120-1798."

Page 9, figure 1, item 1. Change Ref. number "RH70280z040-128" to read "ZZ-H-561" and change MFR Code "(50556)" to read "(81348)."

Page 9. Delete items 2,3,4,5, and 6 from figure 1.

Page 18, figure 1, Hose Assembly. Change as illustrated below.

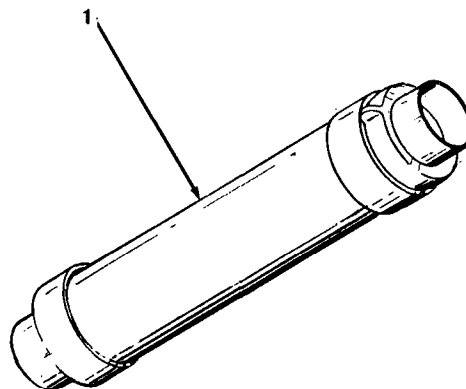


Figure 1. Hose Assembly

TM5-4320-251-24P

C 1

By Order of the Secretary of the Army:

CARL E. VUONO

*General, United States Army
Chief of Staff*

Official:

THOMAS F. SIKORA

*Brigadier General, United States Army
The Adjutant General*

DISTRIBUTION:

To be distributed in accordance with DA Form 12-25E, (qty rqr block no. 1424)

TECHNICAL MANUAL }
 No. 5-4320-251-24P

HEADQUARTERS
 DEPARTMENT OF THE ARMY
 WASHINGTON, D.C., 28 October 1971

ORGANIZATIONAL, DIRECT SUPPORT AND GENERAL SUPPORT
 MAINTENANCE REPAIR PARTS AND SPECIAL TOOLS LISTS

PUMP, RECIPROCATING, POWER DRIVEN,
 DIAPHRAGM, GAS ENGINE DRIVEN,
 WHEEL MOUNTED, 100 GPM

THE GORMAN-RUPP COMPANY MODEL 4D2A016
 FSN 4320-407-2582

Current as of 20 October 1971

Section		Listing Page	Illus. Figure
	I. INTRODUCTION	iii	
	II. PRESCRIBED LOAD ALLOWANCE	vii	
	III. REPAIR PARTS FOR ORGANIZATIONAL MAINTENANCE	1	
Group	01 Hose assembly	1	1
	02 Fuel system	1	2
	03 Engine and mounting	2	3
	04 Pump suction and discharge	3	4
	05 Diaphragm and pot	4	5
	06 Pump gearcase	5	6
	07 Trailer	6	7
SECTION	IV. SPECIAL, TOOLS, TEST, AND SUPPORT EQUIPMENT (NOT APPLICABLE)	8	
	V. REPAIR PARTS FOR DS, GS MAINTENANCE	9	
Group	01 Hose assembly	9	1
	02 Fuel system	9	2
	03 Engine and mounting	10	3
	04 Pump suction and discharge	11	4
	05 Diaphragm and pot	12	5
	06 Pump gearcase	14	6
	07 Trailer	15	7
SECTION	VI. SPECIAL TOOLS, TEST, AND SUPPORT EQUIPMENT (NOT APPLICABLE)	17	
	VII. FEDERAL STOCK NUMBER, AND REFERENCE NUMBER INDEX	25	

SECTION I.

INTRODUCTION

1. Scope

This manual lists repair parts required for the performance of organizational, direct support and general support maintenance of the reciprocating pump.

2. General

a. This Repair Parts List is divided into the following sections:

b. *Prescribed Load Allowance (PLA)—Section II.* A composite listing of repair parts having quantitative allowances for initial stockage at the organizational level.

c. *Repair Parts—Section III.* A list of repair parts authorized for the performance of maintenance at the organizational level in figure and item number sequence.

d. *Special Tools, Test, and Support Equipment—Section IV.* (Not Applicable).

e. *Repair Parts—Section V.* A list of repair parts authorized for the performance of maintenance at the direct support and general support level in figure and item number sequence.

f. *Special Tools, Test, and Support Equipment Section VI.* (Not Applicable).

g. *Federal Stock Number and Reference Number Index—Section VII.* A list of Federal stock numbers in ascending numerical sequence, followed by a list of reference numbers appearing in all the listings, in ascending alphanumeric sequence, cross-referenced to the illustration figure number and item number.

3. Explanation of Columns

The following provides an explanation of columns in the tabular lists in sections II through V:

a. *Source, Maintenance, and Recoverability Codes (SMR).*

(1) Source code indicates the selection status and source for the listed item. Source codes used are:

Code	Explanation
P	Repair Parts, Special Tools and Test Equipment supplied from the GSA DSA, or Army supply system, and authorized for use at indicated maintenance categories.

Code	Explanation
P2	Repair Parts, Special Tools and Test Equipment which are procured and stocked for insurance purposes because the combat or military essentiality of the end item dictates that a minimum quantity be available, in the supply system.
M	Repair Parts, Special Tools and Test Equipment which are not procured or stocked, as such, in the supply system but are to be manufactured at indicated maintenance levels.
A	Assemblies which are not procured or stocked as such, but are made up of two or more units. Such component units carry individual stock numbers and descriptions, are procured and stocked separately and can be assembled to form the required assembly at indicated maintenance categories.
X	Parts and assemblies that are not procured or stocked because the failure rate is normally below that of the applicable end item of component. The failure of such part or assembly should result in retirement of the end item from the support system.
X1	Repair Parts which are not procured or stocked. The requirement for such items will be filled by the next higher assembly or component.
X2	Repair Parts, Special Tools, and Test Equipment which are not stocked and have no foreseen mortality. The indicated maintenance category requiring such repair parts will attempt to obtain the parts through cannibalization or salvage, the item may be requisitioned with exception data, from the end item manager, for immediate use.
G	Major assemblies that are procured with PEMA funds for initial issue only as exchange assemblies at DSU and GSU level. These assemblies will not be stocked above the DS and GS level or returned to depot supply level. <i>Note.</i> Cannibalization or salvage may be used as a source of supply for any items source coded above except those coded X1 and aircraft, support items as restricted by AR 700-42.

(2) Maintenance code indicates the lowest category of maintenance authorized to install the listed item. The maintenance level codes are:

Code	Explanation
O.....	Organizational Maintenance
F.....	Direct Support Maintenance
H.....	General Support Maintenance
D.....	Depot Maintenance

(3) Recoverability code indicates whether unserviceable items should be returned for recovery or salvage. Items not coded are expendable. Recoverability codes are:

Code	Explanation
R	Applied to repair parts, (assemblies and components) special tools and test equipment which are considered economically repairable at direct and general support maintenance levels. When the item is no longer economically repairable, it is normally disposed of at the GS level. When supply considerations dictate, some of these repair parts may be listed for automatic return to supply for depot level repair as set forth in AR 710-50. When so listed, they will be replaced by supply on an exchange basis.
S	Repair Parts, Special Tools, Test Equipment and assemblies which are economically repairable at DSU and GSU activities and which normally are furnished by supply on an exchange basis. When items are determined by a GSU to be uneconomically repairable, they will be evacuated to a depot for evaluation and analysis before final disposition.
T	Higher dollar value recoverable repair parts, special tools and test equipment which are subject to special handling and are issued on an exchange basis. Such items will be repaired or overhauled at depot maintenance activities only. No repair may be accomplished at lower levels.
U	Repair Parts, Special Tools and Test Equipment specifically selected for salvage by reclamation units because of precious metal content, critical materials, high dollar value or reusable casings or castings.

b. Federal Stock Number. Indicates the Federal stock number assigned to the item and will be used for requisitioning purposes.

c. Description. Indicates the Federal item name and any additional description of the item required. A part number or other reference number is followed by the applicable five-digit Federal supply code for manufacturers in parentheses.

d. Unit of Measure (U/M). A two-character alphabetic abbreviation indicating the amount or quantity of the item upon which the allowances are based, e.g., ft, ea, pr, etc.

e. Quantity Incorporated in Unit. Indicates the quantity of the item used in the assembly group. A "V" appearing in this column in lieu of a

quantity indicates that a definite quantity cannot be indicated (e.g., shims, spacers, etc.).

f. Fifteen-Day organizational Maintenance Allowances.

(1) The allowance columns are divided into four subcolumns. Indicated in each subcolumn opposite the first appearance of each item is the total quantity of items authorized for the number of equipments supported. Subsequent appearances of the same item will have the letters "REF" in the allowance columns. Items authorized for use as required but not for initial stockage are identified with an asterisk in the allowance column.

(2) The quantitative allowances for organizational level of maintenance represents one initial prescribed load for a 15-day period for the number of equipments supported. Units and organizations authorized additional prescribed loads will multiply the number of prescribed loads authorized by the quantity of repair parts reflected in the appropriate density column to obtain the total quantity of repair parts authorized.

(3) Organizational units providing maintenance for more than 100 of these equipments shall determine the total quantity of parts required by converting the equipment quantity to a decimal factor by placing a decimal point before the next to last digit of the number to indicate hundredths, and multiplying the decimal factor by the parts quantity authorized in the 51-100 allowance column. Example, authorized allowance for 51-100 equipments is 12; for 140 equipments multiply 12 by 1.40 or 16.80 rounded off to 17 parts required.

(4) Subsequent changes to allowances will be limited as follows: No change in the range of items is authorized. If additional items are considered necessary, recommendation should be forwarded to U.S. Army Mobility Equipment Command for exception or revision to the allowance list. Revisions to the range of items authorized will be made by this Command based upon engineering experience, demand data, or TAERS information.

g. Thirty-Day DS GS Maintenance Allowances.

Note. Allowances in GS Column are for GS maintenance only.

(1) The allowance columns are divided into three subcolumns. Indicated in each subcolumn, opposite the first appearance of each item, is the total quantity of items authorized

for the number of equipments supported. Subsequent appearances of the same item will have the letters "REF" in the applicable allowance columns. Items authorized for use as required but not for initial stockage are identified with an asterisk in the allowance column.

(2) The quantitative allowances for DS/GS levels of maintenance will represent initial stockage for a 30-day period for the number of equipments supported.

(3) Determination of the total quantity of parts required for maintenance of more than 100 of these equipments can be accomplished by converting the equipment quantity to a decimal factor by placing a decimal point before the next to last digit of the number to indicate hundredths, and multiplying the decimal factor by the parts quantity authorized in the 51-100 allowance column. Example, authorized allowance for 51-100 equipments is 40; for 150 equipments multiply 40 by 1.50 or 60 parts required.

h. One-Year Allowances Per 100 Equipments/Contingency Planning Purposes. Indicates opposite the first appearance of each item the total quantity required for distribution and contingency planning purposes. The range of items indicates total quantities of all authorized items required to provide for adequate support of 100 equipments for one year.

i. Depot Maintenance Allowance Per 100 Equipments. Indicates opposite the first appearance of each item the total quantity authorized for depot maintenance of 100 equipments. Subsequent appearances of the same item will have the letters "REF" in the allowance column. Items authorized for use as required but not for initial stockage are identified with an asterisk in the allowance columns.

j. Illustration.

(1) *Figure number.* Indicates the figure number of the illustration in which the item is shown.

(2) *Item number.* Indicates the callout number used to reference the item in the illustration.

4. Special Information

a. Repair parts mortality has been based on 1,000 hours of operation per year.

b. Parts which require manufacture or assembly at a category higher than that authorized for installation will indicate in the source column the higher category.

c. The following publications pertain to the reciprocating pump and its components:

LO 5-2805-257-12	Lubrication Order
TM 5-2805-257-14	Operator, Organizational, Direct Support and General Support Maintenance Manual
TM 5-2805-257-24P	Organizational, Direct Support and General Support Maintenance Repair Parts List
TM 5-4320-251-14	Operator, Organizational, Direct Support and General Support Maintenance Manual

5. How to Locate Repair Parts

a. When Federal Stock Number or Reference Number is Unknown.

(1) *First.* Using the table of contents determine the assembly group, i.e., engine, engine assembly, transmission, transmission assembly, within which the repair part belongs. This is necessary since illustrations are prepared for assembly groups and listings are divided into the same groups.

(2) **Second.** Find the illustration covering the assembly group to which the repair part belongs.

(3) **Third.** Identify the repair part on the illustration and note the illustration figure and item number of the repair part.

(4) **Fourth.** Using the Repair Parts Listing, find the assembly group to which the repair part belongs and locate the illustration figure and item number noted on the illustration.

b. When Federal Stock Number or Reference Number is Known:

(1) **First.** Using the Index of Federal Stock Numbers and Reference Numbers find the pertinent Federal stock number or reference number. This index is in ascending FSN sequence followed by a list of reference numbers in alpha-numeric sequence, cross-referenced to the illustration figure number and item number.

(2) **Second.** Using the Repair Part Listing, find the assembly group of the repair part and the illustration figure number and item number referenced in the Index of Federal Stock Numbers and Reference Numbers.

6. Federal Supply Codes for Manufacturers

<i>Codes</i>	<i>Manufacturer</i>
07707	USM Corporation Fastener Division 510 River Road Shelton, Connecticut 06485
08645	Briggs and Stratton Corporation 2711 North 13th Street Milwaukee, Wisconsin 53201
23540	Niagara Plastics Company, Inc. RD #3 Edinboro Road P.O. Box 3264 Erie, Pennsylvania 16509
24161	Gates Rubber Company 999 South Broadway Denver, Colorado 80217
25567	Gorman-Rupp Company Mansfield, Ohio
43334	New Departure-Hyatt Bearings Division General Motors Corporation Hayes Avenue Sandusky, Ohio 44870
50556	Aeroquip Corporation Republic Rubber Division 1419 Albert Youngstown, Ohio 44505
60380	Torrington Company, The 59 Field Torrington, Connecticut 06790
73287	Hubbard, M.D. P.O. Box 65 Pontiac, Michigan 48056
73809	Geneva Metal Wheel Company 8 Factory Road Geneva, Ohio 44041
73974	Marlin-Rockwell Company Division of TRW Inc. Jamestown Works 402 Chandler Street Jamestown, New York 14701
75665	Lovejoy Flexible Coupling Company 4949 West Lake Street Chicago, Illinois 60644

<i>Codes</i>	<i>Manufacturer</i>
79136	Waldes-Kohinoor, Inc. 47-16 Austel Place Long Island City, New York 11101
79470	Weatherhead Company, The 300 East 131st Street Cleveland, Ohio 44108
79502	Western Metal Specialty Company 1213 North 62nd Street Milwaukee, Wisconsin 53212
80201	Chicago Rawhide Manufacturing Company 1301 Elston Avenue Chicago, Illinois 60622
80204	United States of America Standards Institute 10 East 40th Street New York, New York 10016
81348	Federal Specifications Promulgated by General Services Administration
81349	Military Specifications Promulgated by Standardization Division Directorate of Logistic Services, DSA
86343	Rieke Corporation 555 West 7th Street Auburn, Indiana 46706
95879	Alemite Instrument Division of Stewart-Warner Corporation 1826 Diversey Parkway Chicago, Illinois 60614
96906	Military Standards Promulgated by Standardization Division Directorate of Logistic Services, DSA

7. Recommendations for Maintenance Publication Improvements

Report of errors, omissions, and recommendations for improving this publication by the individual user is encouraged. Reports should be submitted on DA Form 2028 (Recommended Changes to Publications) and forwarded direct to U.S. Army Mobility Equipment Command, 4300 Goodfellow Blvd., ATTN: AMSME-MPP St. Louis, Mo. 63120.

Section II. PRESCRIBED LOAD ALLOWANCE

(1) FEDERAL STOCK NUMBER	(2) DESCRIPTION	(3) 15-DAY ORGANIZATIONAL MAINTENANCE ALW				
		USABLE ON CODE	(a)	(b)	(c)	(d)
			1-5	6-20	21-50	51-100
910-575-3497	Group 01- Hose Assembly Hose, Rubber ZZH561B1X10FT4 3-8IN (81348)		1	1	2	
305-724-583	Group 02 - Fuel System Strainer (GFE)			1	1	
305-724-583	Group 03 - Engine and Mounting Coupling Half 070270C (75665)		1	1	2	
305-724-583	Setscrew 5/16 in. - 18 X 3/4 in. lg. stl. cad. pl MS 51963-87 (96906)				1	
910-607-1157	Spider, Damper 070170C (75665)		1	1	2	
910-607-1157	Group 04- Pump Section and Discharge Gasket G44 (86343)			1	2	
910-607-1157	Gasket 6625G (25567)		1	2	4	
365-281-6655	Group 05- Diaphragm and Pot Diaphragm 4E (24161)	1	2	4	8	
365-281-6655	Cap, Protective 200 (23540)	1	2	4	8	
365-281-6655	Ring, Retaining 5100-156 (79136)					
110-951-8176	Ring, Retaining N5000-315 (79136)					
110-951-8176	Bearing, Roller, Self-Alining 40SD22 (60380)				1	
315-234-1664	Group 06- Pump Gearcase Gasket 6624G (25567)			1	3	
315-234-1664	Gasket 6632G (25567)			1	3	
315-234-1664	Group 07- Trailer Pin, Cotter 3/16 in. dia. X 1-1/2 in. lg, stl. cad. pl MS 24665-495 (96906)		1	1	2	

Section III. REPAIR PARTS FOR ORGANIZATIONAL MAINTENANCE

(1) SMR CODE	(2) FEDERAL STOCK NUMBER	(3) DESCRIPTION USABLE ON CODE	(4) NIT OF EA	(5) QTY INC IN INIT	(6) 15-DAY ORGANIZATIONAL MAINTENANCE ALW				(7) ILLUS- TRATION	
					(a)	(b)	(c)	(d)	(a)	(b)
					1-5	6-20	21-50	51-100	FIG. NO.	ITEM NO.
		GROUP 01 - HOSE ASSEMBLY								
2-O		HOSE ASSEMBLY RH70280Z040-128 (50556)	:A	4	*	*	*	*	1	1
2-O		ADAPTER, HOSE 4-IN. NPSM RV22038-400 (50556)	:A	4					1	2
1---		RING, EXPANSION RV22827-400 (50556)	:A	4					1	3
2-O		ADAPTER, HOSE 4-IN. NPT RV22073-400 (50556)	:A	4					1	4
1---		RING, EXPANSION RV22827-400 (50556)	:A	4	REF	REF	REF	REF	1	5
1-O		HOSE, RUBBER ZZH561B1X10FT4 3-8IN (81348)	:A	4	*	1	1	2	1	6
		GROUP 02 - FUEL SYSTEM								
1-O	4730-011-853	NUT, TUBE 41X4 (79470)	:A	2	*	*	*	*	2	1
1-O		TUBE, COPPER W0444 (25567) MANUFACTURE FROM: TUBING, COPPER, 1/4 IN. OD., 0.030 IN. WALL, 11 IN. LG	:A	1					2	2
1-O		ADAPTER, STRAIGHT, PIPE TO TUBE 48X4 (79470)	:A	1	*	*	*	*	2	3
1-O	4730-231-563	ELBOW, PIPE TO TUBE 49X4 (79470)	:A	1	*	*	*	*	2	4
1-O	2910-575-349	STRAINER (GFE)	:A	1	*	*	1	1	2	5
1-O	4730-278-372	NIPPLE, PIPE 3325X2 (79470)	:A	1	*	*	*	*	2	6
1-O	5305-071-224	SCREW, CAP HEX HD, 1/4 IN. -20 X 1-1/4 IN. LG, STL, CAD. PL MS90725-10 (96906)	:A	2	*	*	*	*	2	7
1-O	5310-761-688	NUT, PLAIN, HEXAGON 1/4 IN. -20, STL, CAD. PL MS51967-2 (96906)	:A	2	*	*	*	*	2	8
1-O	5310-582-596	WASHER, LOCK 1/4 IN., MED. STL, CAD. PL MS95338-44 (96906)	:A	2	*	*	*	*	2	9
1-O		WASHER, FLAT 3/4 IN. OD, 1/4 IN. ID, 0.065 IN. THK, STL K04 (25567)	:A	2	*	*	*	*	2	10
2-O		STRAP, FUEL TANK 38117-007-130-00 (25567)	:A	2	*	*	*	*	2	11
2-O		TANK, FUEL D870428 (79502)	:A	1	*	*	*	*	2	12
2-O	2910-846-094	CAP, FUEL TANK 8143 (79502)	:A	1	*	*	*	*	2	13
1-O	5305-044-550	SCREW, CAP HEX HD, 5/8 IN. -11 X 1 IN. LG, STL, CAD. PL MS90725-158 (96906)	:A	1	*	*	*	*	2	14

(1) SMR CODE	(2) FEDERAL STOCK NUMBER	(3) DESCRIPTION REF NUMBER & MFR CODE	(4) USABLE ON CODE	(5) QTY INC IN INIT	(6) 15-DAY ORGANIZA MAINTENANCE				(7) ILLUS- TRATION	
					(a)	(b)	(c)	(d)	(a)	(b)
					1-5	5-20	1-50	1-100	IG. NO.	ITEM NO.
--O-		WASHER, FLAT 1-5/16 IN. OD, 21/32 IN. ID, 0.074-0.121 IN. THK, STL KE10 (25567)	EA	1	*	*	*	*	2	15
2-O-		BRACKET, LOWER FUEL TANK 41825-506-001-00 (25567)	EA	1					2	16
2-O-		SCREW, CAP HEX HD, 5/8 IN. -11 X 2 IN. LG, DRILLED, STL, CAD. PL 31615-002-000-00 (25567)	EA	1	*	*	*	*	2	17
--O-	5310-820-6653	WASHER, LOCK 5/8 IN., MED, STL, CAD. PL MS35338-50 (96906)	EA	1	*	*	*	*	2	18
2-O-		BALL 44721-007-001-00 (25567)	EA	1					2	19
2-O-		BRACKET, UPPER FUEL TANK 41825-505-001-00 (25567)	EA	1					2	20
		GROUP 03 - ENGINE AND MOUNTING								
--O-	5305-269-3211	SCREW, CAP HEX HD, 3/8 IN. -16 X 1 IN. LG, STL, CAD, PL MS90725-60 (96906)	EA	4	*	*	*	*	3	1
--O-	5310-732-0558	NUT, PLAIN, HEXAGON 3/8 IN. -16, STL, CAD. PL MS51967-8 (96906)	EA	8	*	*	*	*	3	2
--O-	5310-637-9541	WASHER, LOCK 3/8 IN., MED, STL, CAD. PL MS35338-46 (96906)	EA	8	*	*	*	*	3	3
2-O-		GUARD, COUPLING 34631-008-130-00 (25567)	EA	1					3	4
--O-		COUPLING HALF 070270C (75665)	EA	2	*	1	1	2	3	5
--O-	5305-724-5834	SETScrew 5/16 IN. -18 X 3/4 IN. LG, STL, CAD. PL MS51963-87 (96906)	EA	2	*	*	*	1	3	6
--O-		SPIDER, DAMPER 070170C (75665)	EA	1	*	1	1	2	3	7
--O-	5315-057-6601	KEY, MACHINE 3-16 X3-16X1IN (80204)	EA	1	*	*	*	*	3	8
--O-		KEY, WOODRUFF 605 (80204)	EA	1	*	*	*	*	3	9
--O-	5305-225-3841	SCREW, CAP HEX HD, 1/4 IN. -20 X 7/8 IN. LG, STL, CAD. PL MS90725-7 (96906)	EA	8	*	*	*	*	3	10
--O-	5310-582-5961	WASHER, LOCK 1/4 IN., MED, STL, CAD. PL MS35338-44 (96906)	EA	8	REF	REF	REF	REF	3	11
2-O-	2805-072-4871	ENGINE, GASOLINE 2A0 16-3 (GFE) (81349)	EA	1					3	12
--O-	5305-269-3211	SCREW, CAP HEX HD, 3/8 IN. -16 X 1-1/2 IN. LG, STL, CAD. PL MS9072 5-64 (96906)	EA	4	*	*	*	*	3	13

(1) SMR CODE	(2) FEDERAL STOCK NUMBER	(3) DESCRIPTION REF NUMBER & MFR CODE	(4) USABLE ON CODE	(5) QTY INC IN JNIT	(6) 15-DAY ORGANIZATIONAL MAINTENANCE ALW				(7) ILLUS- TRATION	
					(a)	(b)	(c)	(d)	(a)	(b)
					1-5	6-20	21-50	51-100	IG. NO.	ITEM NO.
P--O--		WASHER, FLAT 1 IN. OD, 7/16 IN. ID, 0.0 83 IN. THK, STL K06 (25567)	EA	8	*	*	*	*	3	14
X2-O--		MOUNT, LH ENGINE 41611-016-001-00 (25567)	EA	1					3	15
X2-O--		MOUNT, RH ENGINE 41611-015-001-00 (25567)	EA	2					3	16
P2-O--		SHIM SET 13131 (25567)	EA	4	*	*	*	*	3	17
		GROUP 04 - PUMPSUCTION AND DISCHARGE								
X2-O--		LABEL, SUCTION 6588AG (25567)	EA	1					4	2
X2-O--		LABEL, PRIME 6588AH (25567)	EA	1					4	3
X2-O--		CAP ASSEMBLY S260 (86343)	EA	1					4	4
P--O--	2910-607-1157	GASKET G44 (86343)	EA	1	*	*	1	2	4	5
P2-O--		CAP S260A (86343)	EA	1	*	*	*	*	4	6
P--O--	5310-763-8920	NUT, PLAIN, HEXAGON 5/8 IN. -11, STL, CAD. PL MS51967-20 (96906)	EA	6	*	*	*	*	4	7
P--O--		WASHER, FLAT 1-5/16 IN. OD, 21/32 IN. ID, 0.074-0.121 IN. THK, STL KE10 (25567)	EA	6	REF	REF	REF	REF	4	8
P--O--		STUD 5/8 IN. -11 X 3-1/4 IN. LG, STL C1013 (25567)	EA	4	*	*	*	*	4	9
X2-O--		ACCUMULATOR 6625 (25567)	EA	1					4	10
P--O--		GASKET 6625G (25567)	EA	1	*	1	2	4	4	11
X2-O--		STUD 5/8 IN. -11 X 2-1/2 IN. LG, STL C1010 (25567)	EA	2					4	12
X2-O--		ELBOW, DISCHARGE 6626 (25567)	EA	1					4	13
P--O--		SCREW, MACHINE RD HD, 5/16 IN. -18 X 1 IN. LG, STL, CAD. PL X0504 (25567)	EA	2	*	*	*	*	4	14
P--O--	5305-522-8499	SCREW, CAP HEX HD, 5/16 IN. -18 X 1 IN. LG, STL, CAD. PL MS90725-34 (96906)	EA	2	*	*	*	*	4	15
P--O--	5310-407-9566	WASHER, LOCK 5/16 IN. MED, STL, CAD. PL MS35338-45 (96906)	EA	2	*	*	*	*	4	16

(1) SMR CODE	(2) FEDERAL STOCK NUMBER	(3) DESCRIPTION REF NUMBER & MFCODE	(4) USABLE ON CODE	(5) QTY INC IN JNIT	(6) 15-DAY ORGANIZATIONAL MAINTENANCE ALW				(7) ILLUS- TRATION	
					(a)	(b)	(c)	(d)	(a)	(b)
					1-5	6-20	21-50	51-100	FIG NO	ITEM NO.
P2-O--		SEAT, VALVE 6635 (2 5567)		EA 2	*	*	*	*	4	17
P--O--		SCREW, MACHINE RD HD, 1/4 IN, -2 0 X 5/8 IN. LG. STL. CAD. PL X0402 1/2 (25567)		EA 8	*	*	*	*	4	18
P--O--	5310-582-5965	WASHER, LOCK 1/4 IN., MED. STL, CAD. PL MS35338-44 (96906)		EA 8	REF	REF	REF	REF	4	19
P2-O--		WEIGHT, VALVE 6642 (25567)		EA 2	*	*	*	*	4	20
P2-O--		WEIGHT, VALVE 6801 (25567)		EA 2	*	*	*	*	4	21
P2-O--		FLAP, VALVE 6925 (25567)		EA 2	*	*	*	*	4	22
X2-O--		FLANGE, DISCHARGE 6627 (25567)		EA 1					4	23
		GROUP 05 - DIAPHRAGM AND POT								
P--O--	5310-732-0558	NUT, PLAIN, HEXAGON 3/8 IN. -16, STL, CAD, PL MS51967-8 (96906)		EA 4	REF	REF	REF	REF	5	1
P--O--	5310-637-9541	WASHER, LOCK 3/8 IN., MED. STL, CAD. PL MS35338-46 (96906)		EA 4	REF	REF	REF	REF	5	2
P--O--		U-BOLT 5495 (25567)		EA 2	*	*	*	*	5	3
X2-O--		DRAWBAR 5438 (25567)		EA 1					5	4
P--O--	4730-010-3867	PLUG, PIPE 3/8 IN. NPT P06 (25567)		EA 1	*	*	*	*	5	5
P--O--	5310-763-8921	NUT, PLAIN, HEXAGON 3/4 IN. -10, STL, CAD. PL MS51967-23 (96906)		EA 4	*	*	*	*	5	6
P--O--	5310-847-7888	WASHER, LOCK 3/4 IN., MED. STL, CAD. PL MS35338-51 (96906)		EA 4	*	*	*	*	5	7
P--O--		BOLT, RIBBED 3/4 IN. -10 X 2-3/4 IN. LG. STL BJ1211 (25567)		EA 4	*	*	*	*	5	8
X2-O--		POT, DIAPHRAGM 6622 (25567)		EA 1					5	9
P--O--	5310-768-0318	NUT, PLAIN, HEXAGON 1/2 IN. -13, STL, CAD. PL MS51967-14 (96906)		EA 4	*	*	*	*	5	10
X2-O--		PLATE, DIAPHRAGM 6629 (25567)		EA 1					5	11
P--O--		DIAPHRAGM 4E (24161)		EA 1	1	2	4	8	5	12

(1) SMR CODE	(2) FEDERAL STOCK NUMBER	(3) DESCRIPTION REF NUMBER & MFR CODE	(4) USABLE ON CODE	(5) QTY INC IN JNIT	(6) 15-DAY ORGANIZATIONAL MAINTENANCE ALW				(7) ILLUS- TRATION	
					(a)	(b)	(c)	(d)	(a)	(b)
					1-5	6-20	21-50	51-100	FIG. NO.	ITEM NO.
2-0-		ROD, PLUNGER 6633 (25567)	EA	1					5	13
2-0-		NUT, PLUNGER 6638 (25567)	EA	1	*	*	*	*	5	14
2-0-		SPRING, HELICAL, COMPRESSION 6547 (25567)	EA	1	*	*	*	*	5	15
2-0-		WASHER, FLAT 3 IN. OD, 1-11/16 IN. ID, 3/16 IN. THK, STL 6639 (25567)	EA	1	*	*	*	*	5	16
2-0-	4730-223-6410	FITTING, LUBRICATION 1629B (95879)	EA	1	*	*	*	*	5	17
2-0-		PLATE, DIAPHRAGM 6628 (25567)	EA	1					5	18
2-0-	5305-724-5913	SCREW, CAP HEX HD, 5/8 IN. -11 X 2-1/2 IN. LG, STL, CAD. PL MS90725-166 (96906)	EA	4	*	*	*	*	5	19
2-0-		RING, DIAPHRAGM 6621 (25567)	EA	1					5	20
2-0-		CAP, PROTECTIVE 200 (23540)	EA	1	1	2	4	8	5	21
2-0-	5365-281-6655	RING, RETAINING 5100-156 (79136)	EA	1	*	*	*	1	5	22
2-0-		RING, RETAINING N5000-315 (79136)	EA	1	*	*	*	1	5	23
2-0-		FITTING, LUBRICATION 1610B (95879)	EA	1	*	*	*	*	5	24
2-0-	3110-951-8176	BEARING, ROLLER, SE LF-ALINING 40SD22 (60380)	EA	1	*	*	*	1	5	25
2-0-		HOUSING, BEARING 38331-801-101-00 (25567)	EA	1					5	26
2-0-		GROUP 06 - PUMP GEARCASE								
2-0-		PLUG, PIPE 1/4 IN. NPT P04 (25567)	EA	1	*	*	*	*	6	1
2-0-		BOLT, SHOULDER HEX HD, 5/16 IN. -18 X 2-3/4 IN. LG, STL S1018 (25567)	EA	1	*	*	*	*	6	2
2-0-	5306-225-8507	SCREW, CAP HEX HD, 5/16 IN. -18 X 2-3/4 IN. LG, STL, CAD. PL MS90725-43 (96906)	EA	5	*	*	*	*	6	3
2-0-	5305-225-8514	SCREW, CAP HEX HD, 5/16 IN. -18 X 4-1/2 IN. LG, STL, CAD. PL MS90725-50 (96906)	EA	3	*	*	*	*	6	4
2-0-		BOLT, SHOULDER HEX HD, 5/16 IN. -18 X 4-1/2 IN. LG, STL S1019 (25567)	EA	1	*	*	*	*	6	5
2-0-	5310-880-7744	NUT, PLAIN, HEXAGON 5/16 IN. -18, STL, CAD. PL MS51967-5 (96906)	EA	10	*	*	*	*	6	6

(1) SMR CODE	(2) FEDERAL STOCK NUMBER	(3) DESCRIPTION REF NUMBER & MFR CODE	(4) USABLE ON CODE	(5) QTY INC IN JN11	(6) 15-DAY ORGANIZATIONAL MAINTENANCE ALW				(7) ILLUS- TRATION	
					(a)	(b)	(c)	(d)	(a)	(b)
					1-5	6-20	21-50	51-100	FIG NO	ITEM NO.
--O-	310-407-9566	WASHER, LOCK 5/16 IN., MED, STL, CAD. PL MS35338-45 (96906)	EA	14	REF	REI	REF	REI	6	7
--O-		GASKET 6624G (25567)	EA	1	*	*	1	3	6	8
--O-	305-522-8495	SCREW, CAP HEX HD, 5/16 IN. -18 X 1 IN. LG, STL, CAD. PL MS90725-34 (96906)	EA	4	REF	REI	REF	REI	6	23
--O-		GASKET 6632G (25567)	EA	1	*	*	1	3	6	24
2-O-		HOUSING, ECCENTRIC 6632B (25567)	EA	1					6	31
2-O-		CUP, OIL 46711-503-001-00 (25567)	EA	1	*	*	*	*	6	35
2-O-		RIVET AD53BS (07707)	EA	4					6	37
2-O-		PLATE, IDENTIFICATION 13935A (25567)	EA	1					6	38
2-O-		COVER, GEAR HOUSING 6623B (25567)	EA	1					6	39
		GROUP 07 - TRAILER								
--O-	310-768-0318	NUT, PLAIN, HEXAGON STL, CAD PL, 1/2-13 THD MS51967-14 (96906)	EA	8	REF	REI	REF	REI	7	1
--O-	310-584-5272	WASHER, LOCK STL, CAD. PL, 1/2 IN., MED MS35338-48 (96906)	EA	8	*	*	*	*	7	2
--O-		U-BOLT STL, 1/2-13 THD 7386 (25567)	EA	4	*	*	*	*	7	3
--O-		CLAMP 34911-014-130-00 (25567) MANUFACTURE FROM: TUBING, STEEL, SAE 1010-1020, 1/8 IN. WALL, 1-3/4 IN. DIA, 4-1/2 IN. LG	EA	2					7	4
--O-		HOSE 31412-109-401-00 (25567) MANUFACTURE FROM: HOSE, RUBBER, 5/8 IN. ID, 1 IN. OD, 5 IN. LG	EA	2					7	5
2-O-		GUARD, ENGINE 31971-007-130-00 (25567)	EA	1					7	6
--O-	315-234-1664	PIN, COTTER 3/16 IN. DIA X 1-1/2 IN. LG, STL, CAD. PL MS24665-495 (96906)	EA	2	*	1	1	2	7	7
--O-		WASHER, FLAT 1-1/2 IN. OD, 1-1/64 IN. ID, 1/8 IN. THK, STL S1532 (25567)	EA	4	*	*	*	*	7	8
2-O-		WHEEL D250-1KR324 (73809)	EA	2	*	*	*	*	7	

(1) SMR CODE	(2) FEDERAL STOCK NUMBER	(3) DESCRIPTION REF NUMBER & MFR CODE	(4) USABLE ON CODE	(5) NIT OF EAS	QTY INC IN UNIT	(6) 15-DAY ORGANIZATIONAL MAINTENANCE ALW				(7) ILLUS- TRATION	
						(a)	(b)	(c)	(d)	(a)	(b)
						1-5	6-20	21-50	51-100	FIG. NO.	ITEM NO.
--O-		FITTING, LUBRICATION 2400 (73809)		EA	2	*	*	*	*	7	10
--O-	3310-732-0558	NUT , PLAIN, HEXAGON 3/8 IN. -16 , STL , CAD. PL MS51967-8 (96906)		EA	8	REF	REF	REF	REF	7	11
--O-	3310-637-9541	WASHER, LOCK 3/8 IN., MED, STL, CAD. PL MS35338-46 (96906)		EA	8	REF	REF	REF	REF	7	12
--O-		U-BOLT, AXLE 4610 (25567)		EA	2	*	*	*	*	7	13
2-O-		AXLE 4607Y (25567)		EA	1					7	14
2-F-		BASE 41535-004-001-00 (25567)		EA	1					7	15

Section IV. SPECIAL TOOLS, TEST, AND SUPPORT
EQUIPMENT - NOT APPLICABLE

Section V. REPAIR PARTS FOR DS, GS MAINTENANCE

(1) SMR CODE	(2) FEDERAL STOCK NUMBER	(3) DESCRIPTION REF NUMBER & MFR CODE	(4) USABLE ON CODE	(5) UNIT OF MEAS	QTY INC IN UNIT	(6) 30-DAY DS MAINT ALLOWANCE			(7) 30-DAY GS MAINT ALLOWANCE			(8) 1-YR ALW PER 100 EQUIP CNTGY	(9) DEPOT MAINT ALW PER 100 EQUIP	(10) ILLUS- TRATION		
						(a)	(b)	(c)	(a)	(b)	(c)			(a)	(b)	
						1-20	21-50	51-100	1-20	21-50	51-100			FIG. NO.	ITEM NO.	
		GROUP 01 - HOSE ASSEMBLY														
2-0		HOSE ASSEMBLY RH70280Z040-128 (50556)		EA	4	*	*	*	*	*	5	5		1	1	
2-0		ADAPTER, HOSE 4-IN. NPSM RV22038-400 (50556)		EA	4									1	2	
1----		RING, EXPANSION RV22827-400 (50556)		EA	4									1	3	
2-0		ADAPTER, HOSE 4-IN. NPT RV22073-400 (50556)		EA	4									1	4	
1----		RING, EXPANSION RV22827-400 (50556)		EA	4	REF	REF	REF	REF	REF	REF	REF	REF	1	5	
1-0		HOSE, RUBBER ZZH561B1X10FT4 3-8IN (81348)		EA	4	1	1	2	1	2	5	59	400	1	6	
		GROUP 02 - FUEL SYSTEM														
1-0	4730-011-8537	NUT, TUBE 41X4 (79470)		EA	2	*	*	*	*	*	1	10	25	2	1	
1-0		TUBE, COPPER W0444 (25567) MANUFACTURE FROM: TUBING, COPPER, 1/4 IN. OD., 0.030 IN. WALL, 11 IN. LG		EA	1									2	2	
1-0		ADAPTER, STRAIGHT, PIPE TO TUBE 48X4 (79470)		EA	1	*	*	*	*	*	1	10	25	2	3	
1-0	4730-231-5632	ELBOW, PIPE TO TUBE 49X4 (79470)		EA	1	*	*	*	*	*	1	10	25	2	4	
1-0	2910-575-3497	STRAINER (GFE)		EA	1	*	1	1	1	1	3	30	100	2	5	
1-0	4730-278-3721	NIPPLE, PIPE 3325X2 (79470)		EA	1	*	*	*	*	*	1	10	25	2	6	
1-0	5305-071-2241	SCREW, CAP HEX HD, 1/4 IN. -20 X 1-1/4 IN. LG, STL, CAD. PL MS90725-10 (96906)		EA	2	*	*	*	*	*	1	10	100	2	7	
1-0	5310-761-6882	NUT, PLAIN, HEXAGON 1/4 IN. -20, STL, CAD. PL MS51967-2 (96906)		EA	2	*	*	*	*	*	1	10	100	2	8	
1-0	5310-582-5965	WASHER, LOCK 1/4 IN., MED, STL, CAD. PL MS35338-44 (96906)		EA	2	*	*	*	*	*	4	40	250	2	9	
1-0		WASHER, FLAT 3/4 IN. OD, 1/4 IN. ID, 0.065 IN. THK, STL K04 (25567)		EA	2	*	*	*	*	*	1	10	100	2	10	
2-0		STRAP, FUEL TANK 38117-007-130-00 (25567)		EA	2	*	*	*	*	*	5	10	10	2	11	
2-0		TANK, FUEL D670428 (79502)		EA	1	*	*	*	*	*	5	10	10	2	12	
2-0	2910-846-0943	CAP, FUEL TANK 8143 (79502)		EA	1	*	*	*	*	*	5	50	50	2	13	

(1) SMR CODE	(2) FEDERAL STOCK NUMBER	(3) DESCRIPTION REF NUMBER & MFR CODE	(4) USABLE ON CODE	(5) UNIT OF MEAS	(6) 30-DAY DS MAINT ALLOWANCE	(7) 30-DAY GS MAINT ALLOWANCE	(8) 1-YR ALW PER 100 EQUIP CNTGY	(9) DEPOT MAINT ALW PER 100 EQUIP	(10) ILLUS- TRATION							
									(a)			(b)			(a)	(b)
									1-20	21-50	51-100	1-20	21-50	51-100	FIG. NO.	ITEM NO.
--O--	5305-044-5504	SCREW, CAP HEX HD, 5/8 IN. -11 X 1 IN. LG, STL, CAD, PL MS90725-158 (96906)		EA	1	*	*	*	*	*	1	10	50	2	14	
--O--		WASHER, FLAT 1-5/16 IN. OD, 21/32 IN. ID, 0.074-0.121 IN. THK, STL KE10 (25567)		EA	1	*	*	*	*	*	4	40	450	2	15	
2-O--		BRACKET, LOWER FUEL TANK 41825-506-001-00 (25567)		EA	1								25	2	16	
2-O--		SCREW, CAP HEX HD, 5/8 IN. -11 X 2 IN. LG, DRILLED, STL, CAD, PL 31615-002-000-00 (25567)		EA	1	*	*	*	*	*	*	5	10	2	17	
--O--	5310-820-6653	WASHER, LOCK 5/8 IN., MED, STL, CAD, PL MS35338-50 (96906)		EA	1	*	*	*	*	*	1	10	50	2	18	
2-O--		BAIL 44721-007-001-00 (25567)		EA	1								50	2	19	
2-O--		BRACKET, UPPER FUEL TANK 41825-505-001-00 (25567)		EA	1								25	2	20	
		GROUP 03 - ENGINE AND MOUNTING														
--O--	5305-269-3211	SCREW, CAP HEX HD, 3/8 IN. -16 X 1 IN. LG, STL, CAD, PL MS90725-60 (96906)		EA	4	*	*	*	*	*	1	10	100	3	1	
--O--	5310-732-0558	NUT, PLAIN, HEXAGON 3/8 IN. -16, STL, CAD, PL MS51967-8 (96906)		EA	8	*	*	*	*	*	5	50	700	3	2	
--O--	5310-637-9541	WASHER, LOCK 3/8 IN., MED, STL, CAD, PL MS35338-46 (96906)		EA	8	*	*	*	*	*	5	50	700	3	3	
2-O--		GUARD, COUPLING 34631-008-130-00 (25567)		EA	1									3	4	
--O--		COUPLING HALF 070270C (75665)		EA	2	1	1	2	1	2	4	50	100	3	5	
--O--	5305-724-5834	SETSCREW 5/16 IN. -18 X 3/4 IN. LG, STL, CAD, PL MS51963-87 (96906)		EA	2	*	*	1	*	1	2	20	150	3	6	
--O--		SPIDER, DAMPER 070170C (75665)		EA	1	1	1	2	1	2	4	50	100	3	7	
--O--	5315-057-6608	KEY, MACHINE 3-16X3 -16X1IN (80204)		EA	1	*	*	*	*	*	1	10	50	3	8	
--O--		KEY, WOODRUFF 605 (80204)		EA	1	*	*	*	*	*	1	10	50	3	9	
--O--	5305-225-3840	SCREW, CAP HEX HD, 1/4 IN. -20 X 7/8 IN. LG, STL, CAD, PL MS90725-7 (96906)		EA	8	*	*	*	*	*	2	20	550	3	10	

(1) SMR CODE	(2) FEDERAL STOCK NUMBER	(3) DESCRIPTION REF NUMBER & MFR CODE	(4) USABLE ON CODE UNIT OF MEAS	(5) QTY INC IN UNIT	(6) 30-DAY DS MAINT ALLOWANCE			(6) 30-DAY DS MAINT ALLOWANCE			(8) 1-YR ALW PER 100 EQUIP INTGY	(9) DEPO- MAINT ALW PER 100 QUIP	(10) ILLUS- TRATION		
					(a)	(b)	(c)	(a)	(b)	(c)			(a)	(b)	
					1-20	1-50	1-100	1-20	21-50	1-100			FIG.	TEW NO.	
--O-	5310-582-5965	WASHER, LOCK 1/4 IN., MED, STL, CAD. PL MS35338-44 (96906)	EA	8	REF	REF	REF	REF	REF	REF	REF	REF	3	11	
2-O-	2805-072-4871	ENGINE, GASOLINE 2A016-3 (GFE) (81349)	EA	1									3	12	
--O-	5305-269-3214	SCREW, CAP HEX HD, 3/8 IN. -16 X 1-1/2 IN. LG, STL, CAD. PL MS90725-64 (96906)	EA	4	*	*	*	*	*	2	20	250	3	13	
--O-		WASHER, FLAT 1 IN. OD, 7/16 IN. ID, 0.083 IN. THK, STL K06 (25567)	EA	8	*	*	*	*	*	2	20	450	3	14	
2-O-		MOUNT, LH ENGINE 41611-016-001-00 (25567)	EA	1									3	15	
2-O-		MOUNT, RH ENGINE 41611-015-001-00 (25567)	EA	2									3	16	
2-O-		SHIM SET 13131 (25567)	EA	4	*	*	*	*	*	*	10	200	3	17	
		GROUP 04 - PUMP SUCTION AND DISCHARGE													
--F-		NIPPLE, PIPE 31476-012-000-02 (25567) MANUFACTURE FROM STEEL PIPE, 4.5 IN. OD, 4.026 IN. ID, 6 IN. REQUIRED	EA	2									4	1	
2-O-		LABEL, SUCTION 6588AG (25567)	EA	1								100	4	2	
2-O-		LABEL, PRIME 6588AH (25567)	EA	1								100	4	3	
2-O-		CAP ASSEMBLY S260 (86343)	EA	1									4	4	
--O-	9910-607-1157	GASKET G44 (86343)	EA	1	*	1	2	1	2	4	45	100	4	5	
2-O-		CAP S260A (86343)	EA	1	*	*	*	*	*	*	5	50	4	6	
--O-	5310-763-8920	NUT, PLAIN, HEXAGON 5/8 IN. -11, STL, CAD. PL MS51967-20 (96906)	EA	6	*	*	*	*	*	3	30	400	4	7	
--O-		WASHER, FLAT 1-5/16 IN. OD, 21/32 IN. ID, 0.074 - 0.121 IN. THK, STL KE10 (25567)	EA	6	REF	REF	REF	REF	REF	REF	REF	REF	REF	4	8
--O-		STUD 5/8 IN. -11 X 3-1/4 IN. LG, STL C1013 (25567)	EA	4	*	*	*	*	*	2	25	225	4	9	
2-O-		ACCUMULATOR 6625 (25567)	EA	1									4	10	
--O-		GASKET 6625G (25567)	EA	1	1	2	4	2	4	7	85	300	4	11	
2-O-		STUD 5/8 IN. -11 X 2-1/2 IN. LG, STL C1010 (25567)	EA	2								100	4	12	

(1) SMR CODE	(2) FEDERAL STOCK NUMBER	(3) DESCRIPTION REF NUMBER & MFR CODE	(4) USABLE ON CODE UNIT OF EA	(6)			(7)			(8) 1-YR ALW PER 100 QUIP (NTG)	(9) DEPC MAIN ALW PER 100 QUIP	(10) ILLUS- TRATION		
				30	1	INT	30-DAYS	INT	FIG NO.			TEJ NO.		
				(a)	(b)	(c)	(a)	(b)					(c)	
2-0-		ELBOW, DISCHARGE 6626 (25567)	EA	1							4	13		
1-0-		SCREW, MACHINE RD HD, 5/16 IN. -18 X 1 IN. LG, STL, CAD. PL X0504 (25567)	EA	2	*	*	*	*	*	1	10	100	4	14
1-0-	5305-522-8496	SCREW, CAP HEX HD, 5/16 IN. -18 X 1 IN. LG, STL, CAD. PL MS90725-34 (96906)	EA	2	*	*	*	*	*	2	20	550	4	15
1-0-	5310-407-9566	WASHER, LOCK 5/16 IN., MED, STL, CAD. PL MS35338-45 (96906)	EA	2	*	*	*	*	*	3	30	900	4	16
2-0-		SEAT, VALVE 6635 (25567)	EA	2	*	*	*	*	*	*	10	100	4	17
1-0-		SCREW, MACHINE RD HD, 1/4 IN. -20 X 5/8 IN. LG, STL, CAD. PL X0402 1/2 (25567)	EA	8	*	*	*	*	*	1	10	500	4	18
1-0-	5310-582-5965	WASHER, LOCK 1/4 IN., MED, STL, CAD. PL MS35338-44 (96906)	EA	8	EF	EF	EF	EF	REF	REF	REF	REF	4	19
2-0-		WEIGHT, VALVE 6642 (25567)	EA	2	*	*	*	*	*	*	5	100	4	20
2-0-		WEIGHT, VALVE 6801 (25567)	EA	2	*	*	*	*	*	*	5	100	4	21
2-0-		FLAP, VALVE 6925 (25567)	EA	2	*	*	*	*	*	*	5	200	4	22
2-0-		FLANGE, DISCHARGE 6627 (25567)	EA	1								10	4	23
		GROUP 05 - DIAPHRAGM AND POT												
--0-	5310-732-0558	NUT, PLAIN, HEXAGON 3/8 IN. -16, STL, CAD. PL MS51967-8 (96906)	EA	4	EF	EF	EF	EF	REF	EF	REF	EF	5	1
--0-	5310-637-9541	WASHER, LOCK 3/8 IN., MED, STL, CAD. PL MS35338-46 (96906)	EA	4	EF	EF	EF	EF	REF	EF	REF	EF	5	2
--0-		U-BOLT 5495 (25567)	EA	2	*	*	*	*	*	1	10	100	5	3
2-0-		DRAWBAR 5438 (25567)	EA	1									5	4
--0-	1730-010-3867	PLUG, PIPE 3/8 IN. NPT P06 (25567)	EA	1	*	*	*	*	*	1	10	50	5	5
--0-	5310-763-8921	NUT, PLAIN, HEXAGON 3/4 IN. -10, STL, CAD. PL MS51967-23 (96906)	EA	4	*	*	*	*	*	1	10	300	5	6
--0-	5310-584-7888	WASHER, LOCK 3/4 IN., MED, STL, CAD. PL MS35338-51 (96906)	EA	4	*	*	*	*	*	1	10	300	5	7

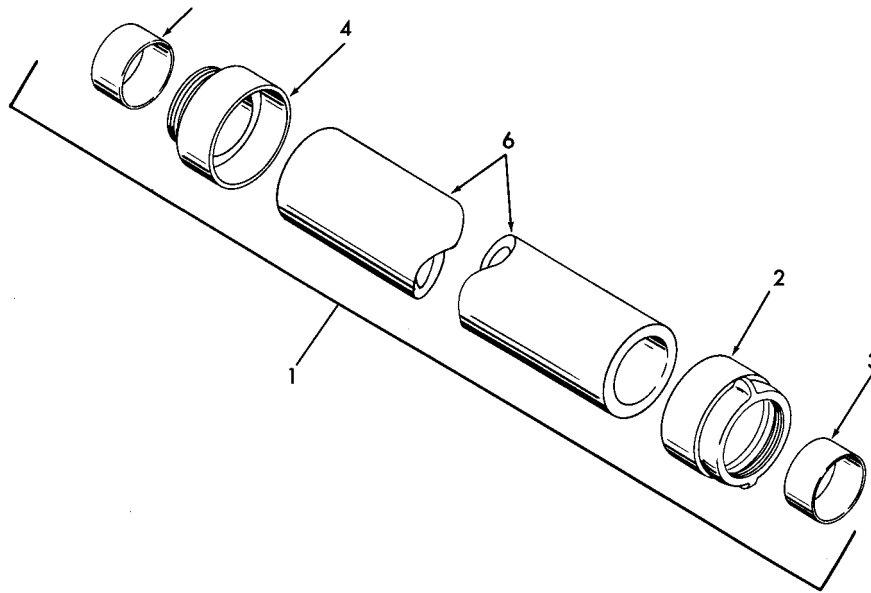
	(3) DESCRIPTION REF NUMBER & MFR CODE	(4) USABLE ON CODE	(5) UNIT OF MEAS	(6) 30-DAY DS MAINT ALLOWANCE			(7) 30-DAY GS MAINT ALLOWANCE			(8) 1-YR ALW PER 100 EQUIP INTGY	(9) MAINT ALW PER 100 QUIP	(10) ILLUS- TRATION		
				(a)	(b)	(c)	(a)	(b)	(c)			(a)	(b)	
				1-20	1-50	1-100	1-20	1-50	1-100			FIG. NO.	TEM NO.	
	BOLT, RIBBED 3/4 IN. -10 X 2-3/4 IN. LG, STL BJ1211 (25567)		EA	4	*	*	*	*	*	1	10	200	5	8
	POT, DIAPHRAGM 6622 (25567)		EA	1								10	5	9
	NUT, PLAIN, HEXAGON 1/2 IN. -13, STL, CAD. PL MS51967-14 (96906)		EA	4	*	*	*	*	*	2	20	450	5	10
	PLATE, DIAPHRAGM 6629 (25567)		EA	1								25	5	11
	DIAPHRAGM 4E (24161)		EA	1	3	4	8	4	8	17	100	100	5	12
	ROD, PLUNGER 6633 (25567)		EA	1								10	5	13
	NUT, PLUNGER 6638 (25567)		EA	1	*	*	*	*	*	*	5	50	5	14
	SPRING, HELICAL, COMPRESSION 6547 (25567)		EA	1	*	*	*	*	*	*	10	75	5	15
	WASHER, FLAT 3 IN. OD, 1-11/16 IN. ID, 3/16 IN. THK, STL 6639 (25567)		EA	1	*	*	*	*	*	1	10	50	5	16
	FITTING, LUBRICATION 1629B (95879)		EA	1	*	*	*	*	*	1	10	100	5	17
	PLATE, DIAPHRAGM 6628 (25567)		EA	1								25	5	18
	SCREW, CAP HEX HD, 5/8 IN. -11 X 2-1/2 IN. LG, STL, CAD. PL MS90725-166 (96906)		EA	4	*	*	*	*	*	1	10	300	5	19
	RING, DIAPHRAGM 6621 (25567)		EA	1								25	5	20
	CAP, PROTECTIVE 200 (23540)		EA	1	3	4	8	4	8	16	.95	100	5	21
	RING, RETAINING 5100-156 (79136)		EA	1	*	*	*	*	1	1	15	100	5	22
	RING, RETAINING N5000-315 (79136)		EA	1	*	*	1	*	1	1	15	100	5	23
	FITTING, LUBRICATION 1610B (95879)		EA	1	*	*	*	*	*	1	10	100	5	24
	BEARING, ROLLER, SELF-ALINING 40SD22 (60380)		EA	1	*	*	*	*	1	1	15	100	5	25
	HOUSING, BEARING 38331-801-101-00 (25567)		EA	1								5	5	26

(1) SMR CODE	(2) FEDERAL STOCK NUMBER	(3) DESCRIPTION REF NUMBER & MFR CODE	(4) USABLE ON CODE	(5) UNIT OF MEAS	(6) QTY INC IN UNIT	(6) 30-DAY DS MAINT ALLOWANCE			(7) 30-DAY GS MAINT ALLOWANCE			(8) 1-YR ALW PER 100 EQUIP CNTGY	(9) DEPOT MAINT ALW PER 100 EQUIP	(10) ILLUS- TRATION		
						(a)	(b)	(c)	(a)	(b)	(c)			(a)	(b)	
						1-20	21-50	51-100	1-20	21-50	51-100			FIG. NO.	ITEM NO.	
		GROUP 06 - PUMP GEARCASE														
--O--		PLUG, PIPE 1/4 IN. NPT P04 (25567)		EA	1	*	*	*	*	*	1	10	50	6	1	
--O--		BOLT, SHOULDER HEX HD, 5/16 IN. -18 X 2-3/4 IN. LG, STL S1018 (25567)		EA	1	*	*	*	*	*	1	10	50	6	2	
--O--	5306-225-8507	SCREW, CAP HEX HD, 5/16 IN. -18 X 2-3/4 IN. LG, STL, CAD. PL MS90725-43 (96906)		EA	5	*	*	*	*	*	1	10	50	6	3	
--O--	5305-225-8514	SCREW, CAP HEX HD, 5/16 IN. -18 X 4-1/2 IN. LG, STL, CAD. PL MS90725-50 (96906)		EA	3	*	*	*	*	*	1	10	50	6	4	
--O--		BOLT, SHOULDER HEX HD, 5/16 IN. -18 X 4-1/2 IN. LG, STL S1019 (25567)		EA	1	*	*	*	*	*	1	10	50	6	5	
--O--	5310-880-7744	NUT, PLAIN, HEXAGON 5/16 IN. -18, STL, CAD. PL MS51967-5 (96906)		EA	10	*	*	*	*	*	1	10	50	6	6	
--O--	5310-407-9566	WASHER, LOCK 5/16 IN., MED, STL, CAD. PL MS35338-45 (96906)		EA	14	REF	REF	REF	REF	REF	REF	REF	REF	6	7	
--O--		GASKET 6624G (25567)		EA	1	*	1	3	1	3	5	60	100	6	8	
--F--		WASHER 2 IN. OD, 1-19/32 IN. ID, 0.090 IN. THK, STL 6636 (25567)		EA	1				*	*	1	10	100	6	9	
--F--		GEAR, SPUR 6641 (25567)		EA	1								25	6	10	
--F--		KEY, MACHINE 3-8X3-8X1 1-4IN (80204)		EA	1				*	*	1	10	50	6	11	
--F--		RING, RETAINING 5100-177 (79136)		EA	1								50	6	12	
--F--		CRANKSHAFT 6550A (25567)		EA	1								25	6	13	
--F--	5365-804-9730	RING, RETAINING N5000-393 (79136)		EA	1				*	*	1	10	50	6	14	
--F--	3110-107-7568	BEARING, BALL, ANNULAR 309SZ (73974)		EA	1				*	*	1	10	100	6	15	
--F--		WASHER 2 IN. OD, 1.255 IN. ID, 0.090 IN. THK, STL 6637 (25567)		EA	1								100	6	16	
--F--		GEAR, INTERNAL 21993 (08645)		EA	1								50	6	17	
--F--		GEARSHAFT, SPUR 6634 (25567)		EA	1								50	6	18	
--F--		PLUG, EXPANSION HP1375 (73287)		EA	1				*	*	1	10	25	6	19	
--F--	3110-144-8663	BEARING, SLEEVE 31512-033-000-00 (25567)		EA	1				*	*	1	10	100	6	20	
--F--	3110-157-0535	BEARING, ROLLER, NEEDLE B1616 (60380)		EA	1				*	*	1	10	100	6	21	

1) MFR QDE	2) FEDERAL STOCK NUMBER	3) DESCRIPTION REF NUMBER & MFR CODE	4) USABLE ON CODE UNIT OF MEAS	5) QTY INC IN UNIT	6) 30-DAY DS MAINT ALLOWANCE			7) 30-DAY GS MAINT ALLOWANCE			8) 1-YR ALW PER 100 EQUIP CNTGY	9) DEPOT MAINT ALW PER 100 EQUIP	10) ILLUS- TRATION		
					(a)	(b)	(c)	(a)	(b)	(c)			(a)	(b)	
					1-20	21-50	51-100	1-20	21-50	51-100			FIG. NO.	ITEM NO.	
-F--		HOUSING, GEAR 6624 (25567)	EA	1								10	6	22	
-O--	5305-522-8499	SCREW, CAP HEX HD, 5/16 IN. -18 X 1 IN. LG, STL, CAD. PL MS90725-34 (96906)	EA	4	REF	REF	REF	REF	REF	REF	REF	REF	REF	6	23
-O--		GASKET 6632G (25567)	EA	1	*	1	3	1	3	5	60	100	6	24	
-F--	5340-809-3389	RING, RETAINING N5000-185 (79136)	EA	1				*	*	1	10	50	6	25	
-F--		SHAFT ASSEMBLY 44148-001-001-00 (25567)	EA	1								5	6	26	
-F--	3110-554-3232	BEARING, BALL, ANNULAR 3204X1A (43334)	EA	2				*	*	1	10	200	6	27	
-F--		SPACER 31413-048-130-00 (25567)	EA	1								25	6	28	
-F--		SHAFT 38521-013-150-00 (25567)	EA	1								25	6	29	
-F--	5330-948-7140	SEAL, PLAIN, ENCASED 16024M1 (80201)	EA	1				1	2	4	50	100	6	30	
-O--		HOUSING, ECCENTRIC 6632B (25567)	EA	1								5	6	31	
-F--		PLUG, EXPANSION HP1625 (73287)	EA	1				*	*	1	10	25	6	32	
-F--		BEARING, SLEEVE 31512-034-000-00 (25567)	EA	1				*	*	1	10	100	6	33	
-F--	3110-736-1105	BEARING, ROLLER, NEEDLE B2020 (60380)	EA	1				*	*	1	10	100	6	34	
-O--		CUP, OIL 46711-503-001-00 (25567)	EA	1	*	*	*	*	*	*	10	75	6	35	
-F--		BEARING, BALL, ANNULAR 3308X1A (43334)	EA	1				*	*	1	10	100	6	36	
-O--		RIVET AD53BS (07707)	EA	4									6	37	
-O--		PLATE, IDENTIFICATION 13935A (25567)	EA	1									6	38	
-O--		COVER, GEAR HOUSING 6623B (25567)	EA	1								10	6	39	
-O--	5310-768-0318	GROUP 07 - TRAILER NUT, PLAIN, HEXAGON STL, CAD. PL, 1/2-13 THD MS51967-14 (96906)	EA	8	REF	REF	REF	REF	REF	REF	REF	REF	REF	7	1
-O--	5310-584-5272	WASHER, LOCK STL, CAD. PL, 1/2 IN., MED MS35338-48 (96906)	EA	8	*	*	*	*	*	1	10	400	7	2	
-O--		U-BOLT STL, 1/2-13 THD 7386 (25567)	EA	4	*	*	*	*	*	1	10	200	7	3	

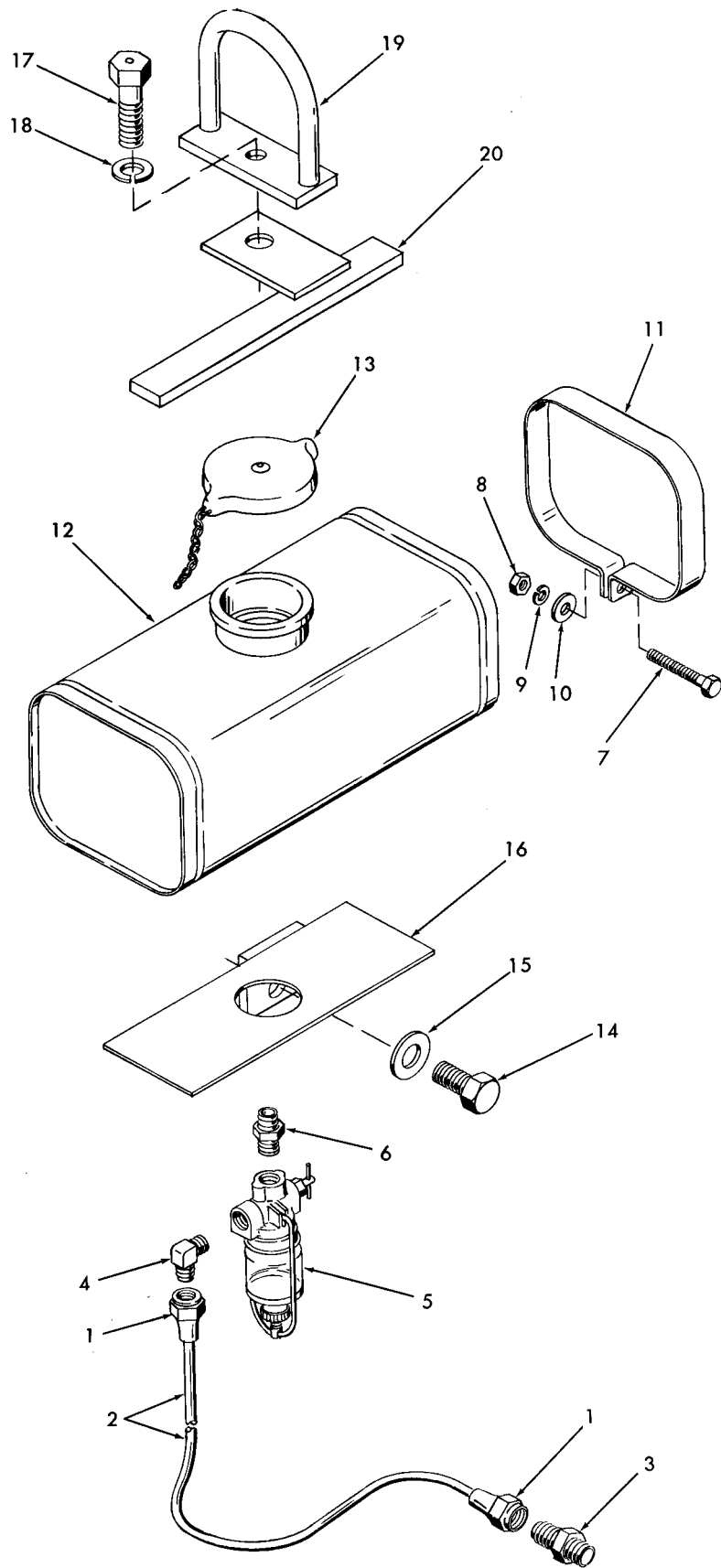
(1) SMR CODE	(2) FEDERAL STOCK NUMBER	DESCRIPTION REF NUMBER & MFR CODE	(4) USABLE ON CODE UNIT OF MEAS	(5) QTY INC IN INIT	(6) 30-DAY DS MAINT ALLOWANCE			(7) 30-DAY GS MAINT ALLOWANCE			(8) 1-YR ALW PER 100 QUIP NTG)	(9) DEPO MAINT ALW PER 100 QUIP	(10) ILLUS- TRATION	
					(a)	(b)	(c)	(a)	(b)	(c)			(a)	(b)
					-20	1-50	1-100	1-20	1-50	1-100			FIG. NO.	TEW NO.
1--O-		CLAMP 34911-014-130-00 (25567) MANUFACTURE FROM: TUBING, STEEL, SAE 1010-1020, 1/8 IN. WALL, 1-3/4 IN. DIA, 4-1/2 IN. LG	EA	2								7	4	
1--O-		HOSE 31412-109-401-00 (25567) MANUFACTURE FROM: HOSE, RUBBER, 5/8 IN. ID, 1 IN. OD, 5 IN. LG	EA	2								7	5	
2-O-		GUARD, ENGINE 31971-007-130-00 (25567)	EA	1								7	6	
--O-	5315-234-1664	PIN, COTTER 3/16 IN. DIA X 1-1/2 IN. LG, STL, CAD. PL MS24665-495 (96906)	EA	2	1	1	2	1	2	4	50	200	7	7
--O-		WASHER, FLAT 1-1/2 IN. OD, 1-1/64 IN. ID, 1/8 IN. THK, STL S1532 (25567)	EA	4	*	*	*	*	*	1	10	300	7	8
2-O-		WHEEL D250-1KR324 (73809)	EA	2	*	*	*	*	*	*	10	100	7	9
--O-		FITTING, LUBRICATION 2400 (73809)	EA	2	*	*	*	*	*	1	10	200	7	10
--O-	5310-732-0558	NUT, PLAIN, HEXAGON 3/8 IN. -16, STL, CAD. PL MS51967-8 (96906)	EA	8	REF	REF	REF	REF	REF	REF	REF	REF	7	11
--O-	5310-637-9541	WASHER, LOCK 3/8 IN. , MED, STL, CAD. PL MS35338-46 (96906)	EA	8	REF	REF	REF	REF	REF	REF	REF	REF	7	12
--O-		U-BOLT, AXLE 4610 (25567)	EA	2	*	*	*	*	*	1	10	50	7	13
2-O-		AXLE 4607Y (25567)	EA	1								25	7	14
2-F-		BASE 41535-004-001-00 (25567)	EA	1								10	7	15

Section VI. SPECIAL TOOLS, TEST, AND SUPPORT
EQUIPMENT - NOT APPLICABLE



ME 4320-251-24P/1

FIGURE 1. HOSE ASSEMBLY



ME 4320-251-24P/2

FIGURE 2. FUEL SYSTEM

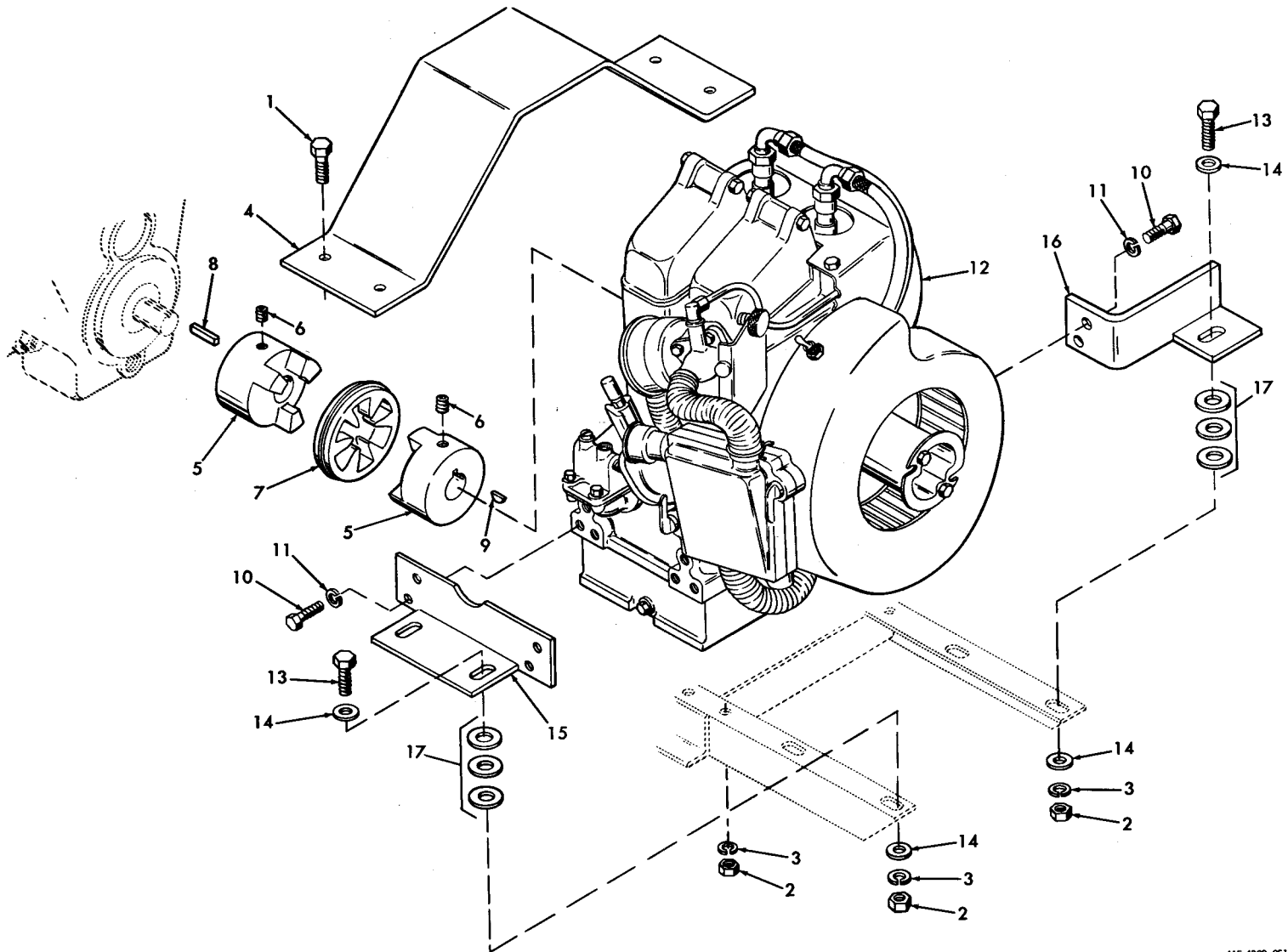


FIGURE 3. ENGINE AND MOUNTING

.ME 4320-251-24P/3

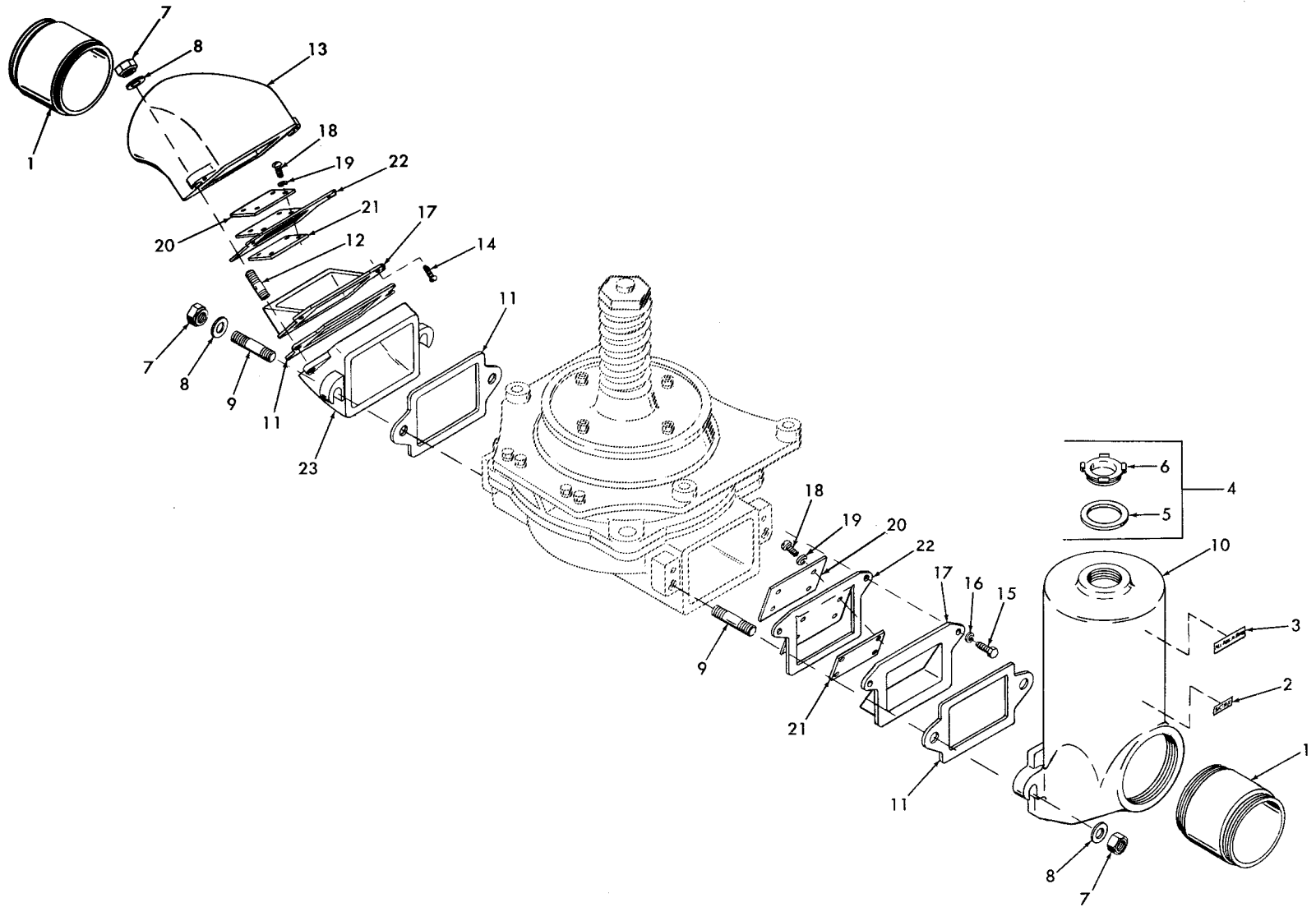


FIGURE 4. PUMP SUCTION AND DISCHARGE

ME 4320-251-24P/4

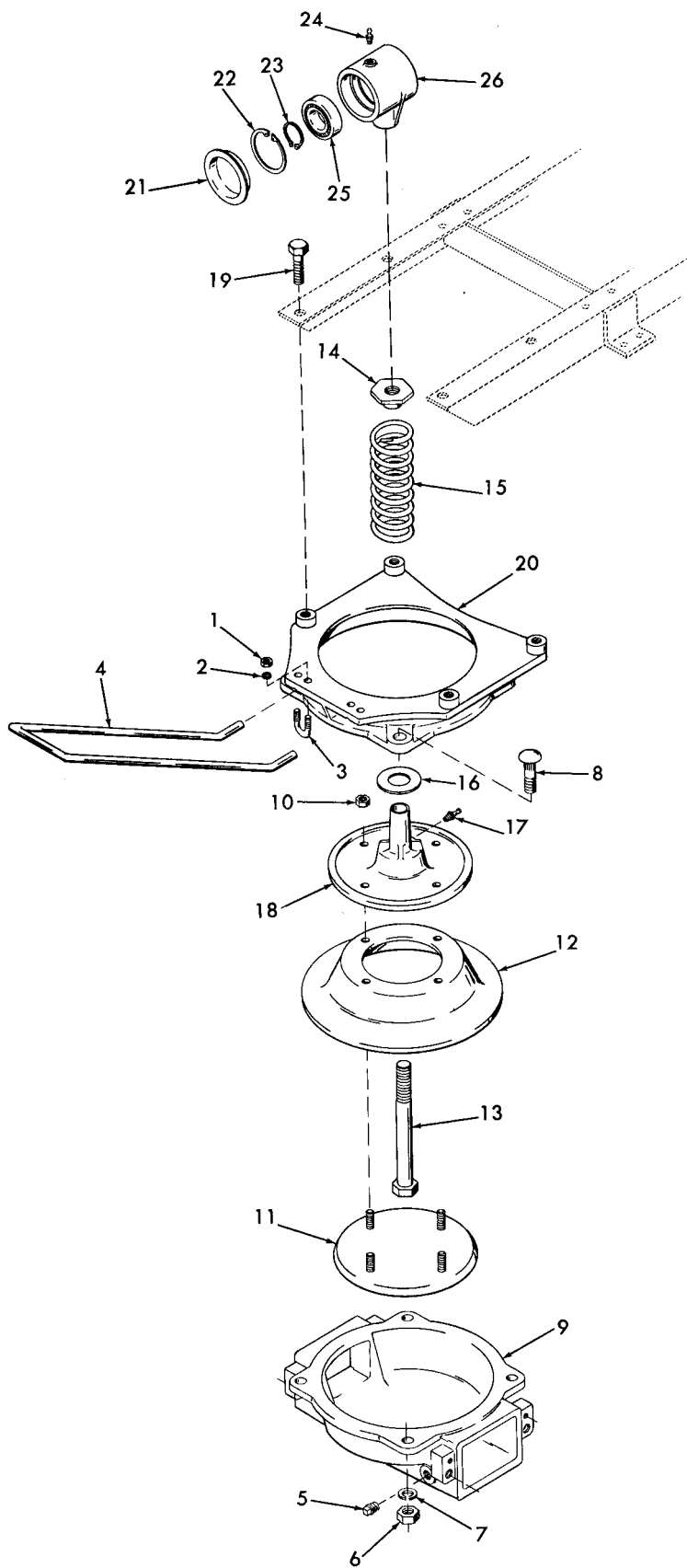


FIGURE 5. DIAPHRAGM AND POT

ME 4320-251-24P/5

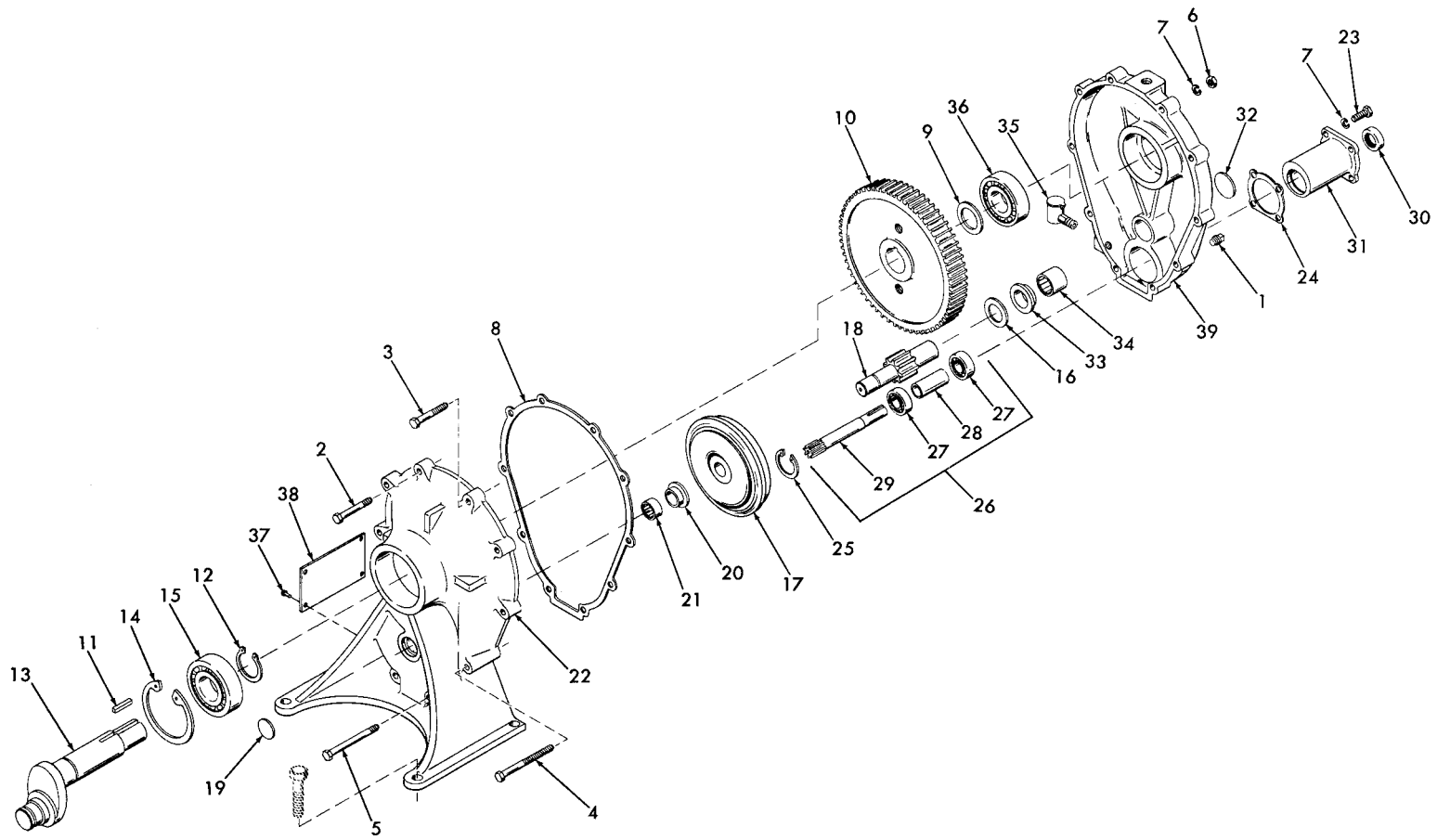
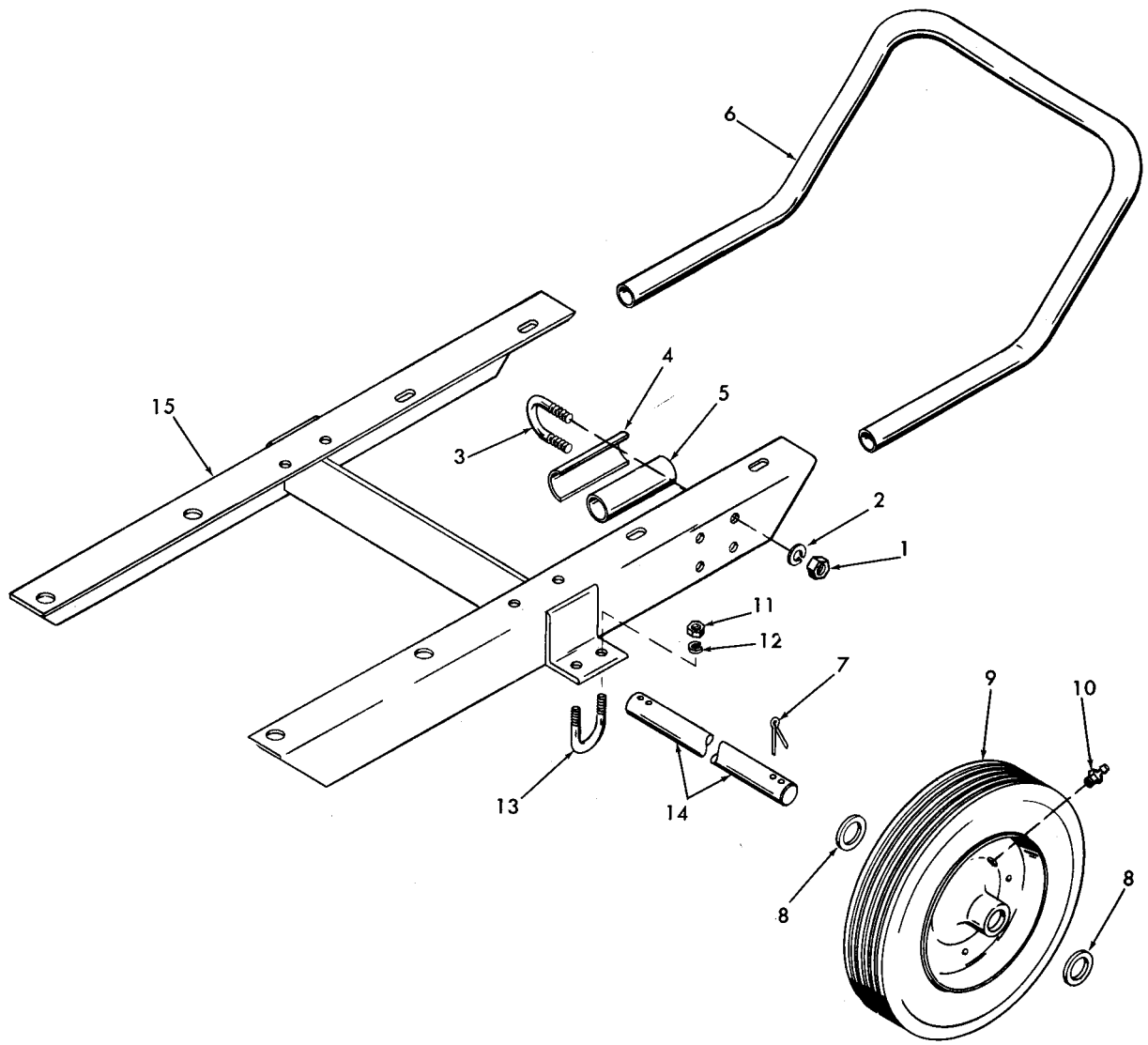


FIGURE 6. PUMP GEARCASE



ME 4320-251-24P/7

FIGURE 7. TRAILER

Section VII. INDEX — FEDERAL STOCK NUMBER AND REFERENCE NUMBER

CROSS-REFERENCE TO FIGURE AND ITEM NUMBER

<u>Stock Number</u>	<u>Figure No.</u>	<u>Item No.</u>	<u>Stock Number</u>	<u>Figure No.</u>	<u>Item No.</u>
2805-072-4871	3	12	5310-407-9566	4	16
2910-575-3497	2	5		6	7
2910-607-1157	4	5	5310-582-5965	2	9
2910-846-0943	2	13		3	11
3110-107-7568	6	15		4	19
3110-144-8663	6	20	5310-584-5272	7	2
3110-157-0535	6	21	5310-584-7888	5	7
3110-554-3232	6	27	5310-637-9541	3	3
3110-736-1105	6	34		5	2
3110-951-8176	5	25		7	12
4730-010-3867	5	5	5310-732-0558	3	2
4730-011-8537	2	1		5	1
4730-223-6410	5	17		7	11
4730-231-5632	2	4	5310-761-6882	2	8
4730-278-3721	2	6	5310-763-8920	4	7
5305-044-5504	2	14	5310-763-8921	5	6
5305-071-2241	2	7	5310-768-0318	5	10
5305-225-3840	3	10		7	1
5305-225-8514	6	4	5310-820-6653	2	18
5305-268-3214	3	13	5310-880-7744	6	6
5305-269-3211	3	1	5315-057-6608	3	8
5305-522-8499	4	15	5315-234-1664	7	7
	6	23	5330-948-7140	6	30
5305-724-5834	3	6	5365-281-6655	5	22
5305-724-5913	5	19	5365-804-9730	6	14
5306-225-8507	6	3	5340-809-3389	6	25

<u>Reference No.</u>	<u>Mfg Code</u>	<u>Fig. No.</u>	<u>Item No.</u>	<u>Reference No.</u>	<u>Mfg Code</u>	<u>Fig. No.</u>	<u>Item No.</u>
AD53BS	07707	6	37	MS35338-48	96906	7	2
BJ1211	25567	5	8	MS35338-50	96906	2	18
B1616	60380	6	21	MS35338-51	96906	5	7
B2020	60380	6	34	MS51963-87	96906	3	6
C1010	25567	4	12	MS51967-14	96906	5	10
C1013	25567	4	9			7	1
D250-1KR324	73809	7	9	MS51967-2	96906	2	8
D670428	79502	2	12	MS51967-20	96906	4	7
G44	86343	4	5	MS51967-23	96906	5	6
HP1375	73287	6	19	MS51967-5	96906	6	6
HP1625	73287	6	32	MS51967-8	96906	3	2
KE10	25567	2	15			5	1
		4	8			7	11
K04	25567	2	10	MS90725-10	96906	2	7
K06	25567	3	14	MS90725-158	96906	2	14
MS24665-495	96906	7	7	MS90725-166	96906	5	19
MS35338-44	96906	2	9	MS90725-34	96906	4	15
		3	11			6	23
		4	19	MS90725-43	96906	6	3
MS35338-45	96906	4	16	MS90725-50	96906	6	4
		6	7	MS90725-60	96906	3	1
MS35338-46	96906	3	3	MS90725-64	96906	3	13
		5	2	MS90725-7	96906	3	10
		7	12	N5000-185	79136	6	25

<u>Reference No.</u>	<u>Mfg Code</u>	<u>Fig. No.</u>	<u>Item No.</u>	<u>Reference No.</u>	<u>Mfg Code</u>	<u>Fig. No.</u>	<u>Item No.</u>
N5000-315	79136	5	23	41X4	79470	2	1
N5000-393	79136	6	14	41535-004-001-00	25567	7	15
P04	25567	6	1	41611-015-001-00	25567	3	
P06	25567	5	5	41611-016-001-00	25567	3	
RH70280Z040-128	50556	1	1	41825-505-001-00	25567	2	
RV22038-400	50556	1	2	41825-506-001-00	25567	2	
RV22073-400	50556	1	4	44148-001-001-00	25567	6	26
RV22827-400	50556	1	3	44721-007-001-00	25567	2	19
		1	5	4607Y	25567	7	14
S1018	25567	6	2	4610	25567	7	13
S1019	25567	6	5	46711-503-001-00	25567	6	35
S1532	25567	7	8	48X4	79470	2	3
S260	86343	4	4	49X4	79470	2	4
S260A	86343	4	6	5100-156	79136	5	22
W0444	25567	2	2	5100-177	79136	6	12
X0402 1/2	25567	4	18	5438	25567	5	4
X0504	25567	4	14	5495	25567	5	3
ZZH561B1X10FT4 3-8IN	81348	1	6	605	80204	3	9
070170C	75665	3	7	6547	25567	5	15
070270C	75665	3	5	6550A	25567	6	13
13131	25567	3	17	6588AG	25567	4	2
13935A	25567	6	38	6588AH	25567	4	3
16024M1	80201	6	30	6621	25567	5	20
1610B	95879	5	24	6622	25567	5	9
1629B	95879	5	17	6623B	25567	6	39
2A016-3	81349	3	12	6624	25567	6	22
200	23540	5	21	6624G	25567	6	8
21993	08645	6	17	6625	25567	4	10
2400	73809	7	10	6625G	25567	4	11
3-16X3-16X1IN	80204	3	8	6626	25567	4	13
3-8X3-8X1 1-4IN	80204	6	11	6627	25567	4	23
309SZ	73974	6	15	6628	25567	5	18
31412-109-401-00	25567	7	5	6629	25567	5	11
31413-048-130-00	25567	6	28	6632B	25567	6	31
31476-012-000-02	25567	4	1	6632G	25567	6	24
31512-033-000-00	25567	6	20	6633	25567	5	13
31512-034-000-00	25567	6	33	6634	25567	6	18
31615-002-000-00	25567	2	17	6635	25567	4	17
31971-007-130-00	25567	7	6	6636	25567	6	9
3204X1A	43334	6	27	6637	25567	6	16
3308X1A	43334	6	36	6638	25567	5	14
3325X2	79470	2	6	6639	25567	5	16
34631-008-130-00	25567	3	4	6641	25567	6	10
34911-014-130-00	25567	7	4	6642	25567	4	20
38117-007-130-00	25567	2	11	6801	25567	4	21
38331-801-101-00	25567	5	26	6925	25567	4	22
38521-013-150-00	25567	6	29	7386	25567	7	3
4E	24161	5	12	8143	79502	2	13
40SD22	60380	5	25				

By Order of the Secretary of the Army:

W.C. WESTMORELAND,
*General, United States Army,
Chief of Staff.*

Official:

VERNE L. BOWERS,
Major General, *United States Army,
The Adjutant General.*

Distribution:

To be distributed in accordance with DA Form 12-25, Section I, (qty rqr block #242) organizational maintenance requirements for Pumps, Centrifugal, Fresh Water.

☆ U.S. GOVERNMENT PRINTING OFFICE: 1971-769-160 /177

TM 5-4320-251-24P PUMP, RECIPROCATING, POWER DRIVEN - 1971